

SENSO Lighting

Free Standing Uplighter

SENSO Lighting

OLIGO Canada

#202, 2509 Dieppe Avenue SW

Calgary, Alberta, T3E 7J9

Canada



(403) 216-7043



(403) 216-7045



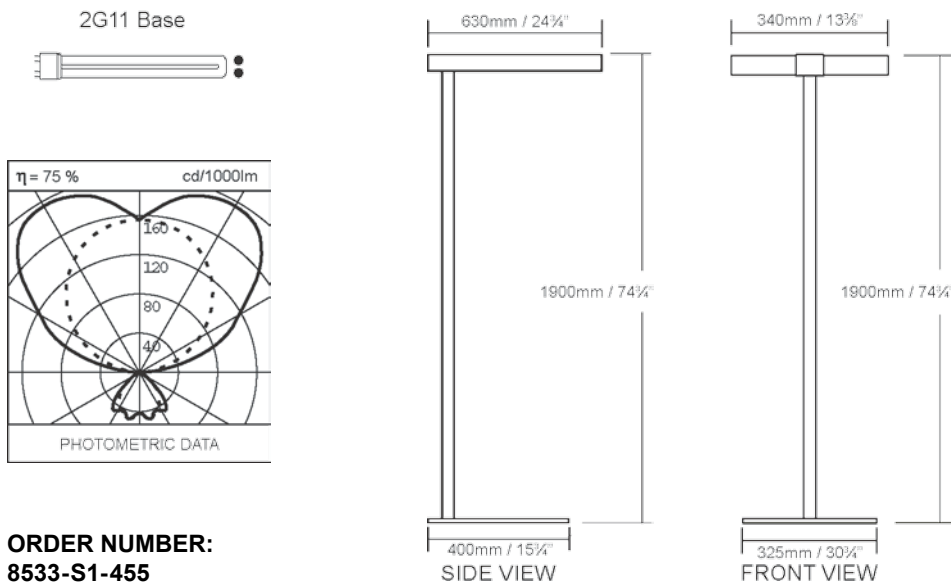
info@sensolighting.com

www.sensolighting.com

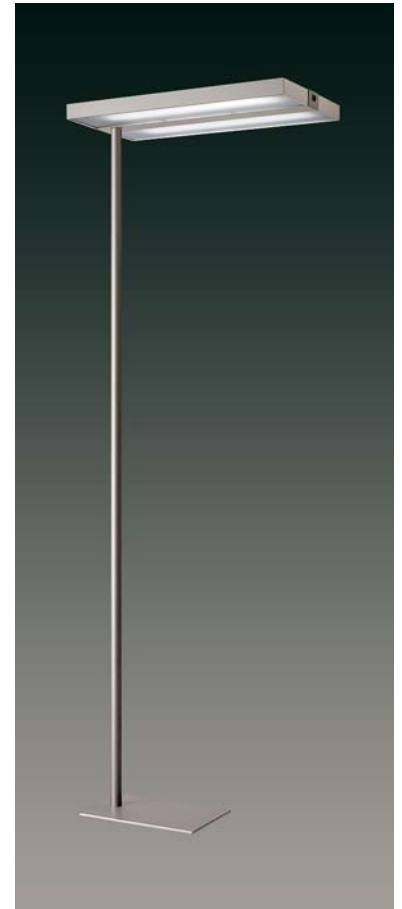


Switchable version (4 lamps to 2 lamps)

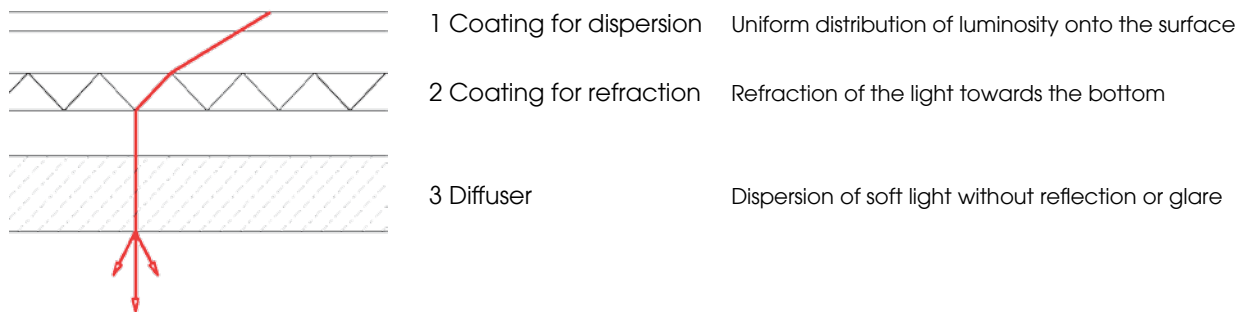
- Switchable Osram Pentron PROStart T5HO ballast (4 lamps to 2 lamps)
- 3K-Deflection-Light Technique (see illustration below)
- 15% direct / 85% indirect light emission without glare or reflections
- 4 x 55W FT55DL/835 lamps
- Anodized aluminum and matt metallic grey finish
- Decentralized luminaire stand with anti-tip feature
- Complete with 3m/10' power cord, plug and lamps



ORDER NUMBER:
8533-S1-455



3K-Deflection-Light Technique



Free Standing Uplighter

SENSO Advanced Light Sensor Technology

The PURE SENSO has a sensor with integrated Daylight Harvesting and Movement Detection to allow for maximum energy efficiency. By means of intelligent electronics, each PURE SENSO luminaire can be controlled individually and according to the requirements of the user.

Movement Detection

Automatically switch on the light only when it is actually needed? No problem with the SENSO Movement Detector. High operational convenience and large energy savings are typically achieved in this application.



The workspace is unoccupied, the luminaire is switched off.

As soon as the sensor detects movement in the detection area and if the illuminance level is too low, the luminaire switches on automatically.

Upon leaving the workspace, the luminaire will switch off after 20 minutes of absence of any movement within the sensor area.

Daylight Harvesting

Maintains a constant illuminance at a user set value, on the basis of available daylight and ensures optimal lighting comfort, entirely without any manual intervention.



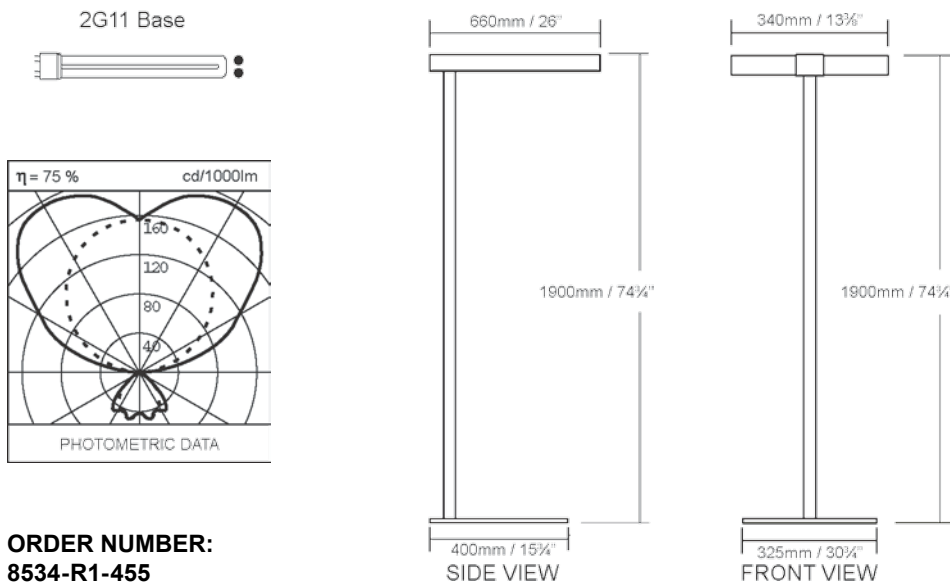
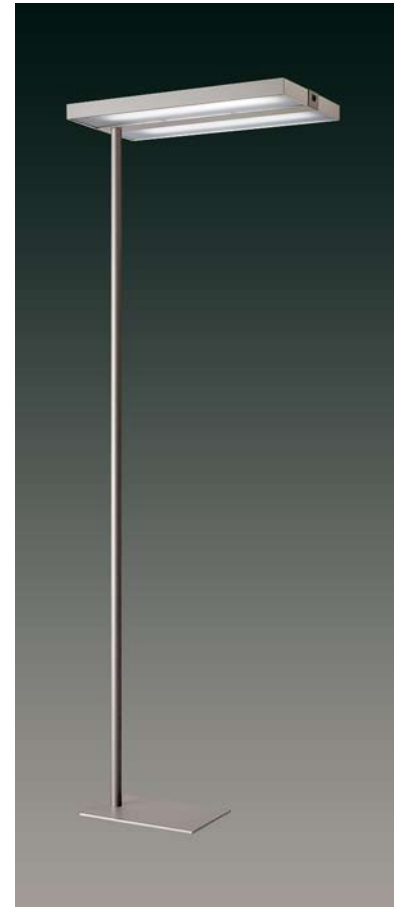
In the morning, as long as daylight is insufficient, the luminaire will switch on and add the required quantity of light.

As soon as, in the course of the day, the quantity of daylight available is sufficient to ensure the illuminance required, the luminaire will switch off automatically.

Towards the evening, or whenever daylight becomes insufficient, the luminaire will switch on again and add the required quantity of light.

Fully dimmable version with advanced light sensor technology

- Intelligent SENSO technology (*see below*)
- Digitally dimmable ballast
allows total potential energy savings in excess of 80%
- 3K-Deflection-Light Technique (*see page 3*)
- 15% direct / 85% indirect light emission without glare or reflections
- 4 x 55W FT55DL/835 lamps
- Anodized aluminum and matt metallic grey finish
- Decentralized luminaire stand with anti-tip feature
- Complete with 3m/10' power cord, plug and lamps



**ORDER NUMBER:
8534-R1-455**



SENSO Technology

works in perfect accordance with the daylight. The “intelligent” sensor adapts to the needs of the user. The electronics automate the luminaire depending on available daylight and workspace occupancy. Includes combination switch for manual dimming, on/off operation and setting of nominal values as well as a separate switch to turn motion detection on/off (*for more information see page 4*).



Accessory

Optical unit to enlarge the sensor detection zone

ORDER NUMBER: 9510-M1

Why you want to use Free Standing Uplighters...

Solutions...

Better Utilization Of Workspaces

Often the specific use of office areas is not known at the planning stages, therefore the planning of workspaces is accordingly difficult or impossible. Ceiling-bound lighting solutions limit the options of using the office areas, as they restrict the possibilities for individual arrangement of workstations and displays. Costly adaptation or customization may often be necessary to achieve the wanted visual effect.



By using Free Standing Uplighters optimal lighting can be achieved and the entire office area can be used - the lighting can be adjusted to the individual user, rather than the room, without major effort or additional costs, thus providing the freedom for attractive layouts.

Unsurpassed Uniform Illumination

To achieve the best possible illumination with ceiling-bound lighting solutions it is often necessary to adjust the workspace layout to the already installed lighting; instead of the other way around.



Free Standing Uplighters produce a large amount of indirect lighting, that distributed asymmetrically provides for optimal, uniform illumination of the ceiling. It is supplemented by an effective amount of directional light, which illuminates the workspaces without causing any glare or unwanted reflections.

High Flexibility

In offices, people move around frequently. Changing teams and ever new processes require changes in the organizational structure of companies; explaining why up to 30% of workstations are moved each year. This requires an extremely flexible infrastructure. Furniture and lighting systems should therefore be as adaptable to new requirements as easily and efficiently as possible.

Free Standing Uplighters are an ideal solution to this case. Fitted with just a power cord and plug, they can be connected at any workspace and, in case of reorganization of the office layout or even relocation of the entire office, can easily be adapted without major installation effort - no electrician required.

Individuality

The tasks to be performed at the workspace are just as varied as people's individual visual strength. Depending on the task to be performed (which may well change on several occasions during the day) and on (age-related) visual performance, highly varied lighting levels will be required at the workspace, which need to be adjusted to suit individual requirements.



A lighting solution using Free Standing Uplighters can meet these requirements. Each person can adjust the light level at his/her workspace to his/her personal needs. Daylight harvesting technology and movement detectors create additional operational convenience.

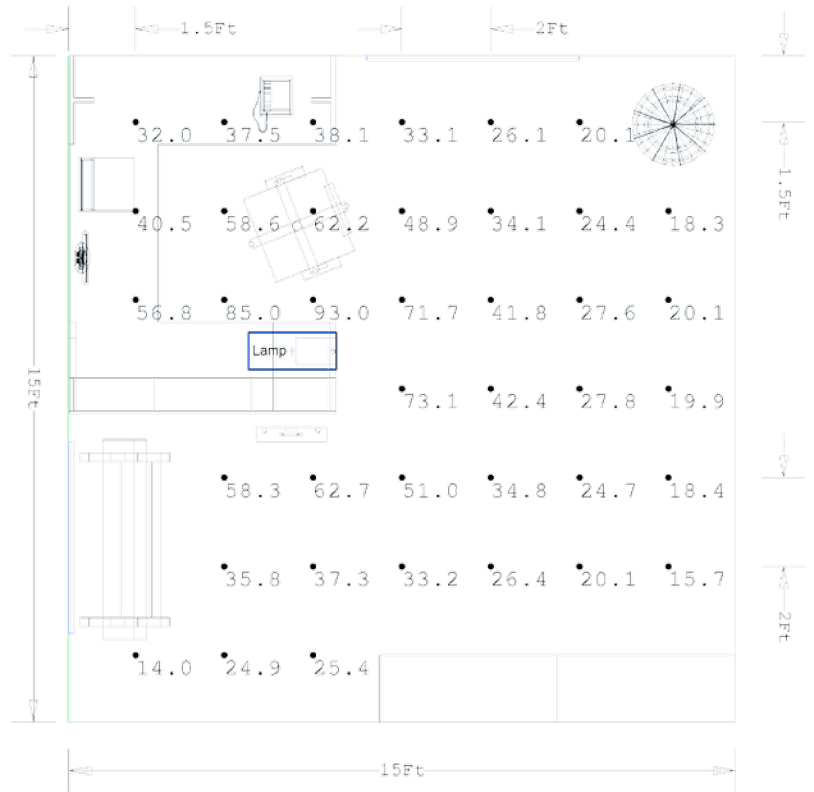
Increased Energy Efficiency

Especially in spacious buildings, there is huge potential for optimization. The more lighting is focussed on the actual workspace, the more significantly the mean illuminance level is reduced, thus lowering energy consumption.

A Free Standing Uplighter's main purpose is to illuminate the actual workspace, therefore decreasing the demands on energy consumption, especially when combined with the latest technology using movement detection and daylight harvesting.

Characteristics

| | |
|----------------------------|------------------------------|
| Total Rated Lamp Lumens | 19200 (4x 4800lm) |
| Total Wattage | 242 (4x 55W) |
| Lamp Type | Osram FSD55 |
| Color Temperature | 4000 Kelvin |
| Total Luminaire Efficiency | 75% |
| CIE Type | Semi-Indirect |
| Basic Luminous Shape | Rectangular |
| Luminous Length | 24" / 610mm |
| Luminous Width | 10 5/8" / 270mm |
| Luminous Height | 74 3/4" / 1900mm |
| Working Level Height | 2' 6" / 762mm |
| | |
| Room Height | 8' 6" / 2.59m |
| Room Size | 15' x 15' / 4.57m x 4.57m |
| Wall Reflectivity | 63% |
| Ceiling Reflectivity | 86% |
| Floor Reflectivity | 35% |
| | |
| Average Light Level | 38.87 Footcandles |
| Minimum Light Level | 14.00 Footcandles |
| Maximum Light Level | 93.00 Footcandles |



Photometric Data in Lux

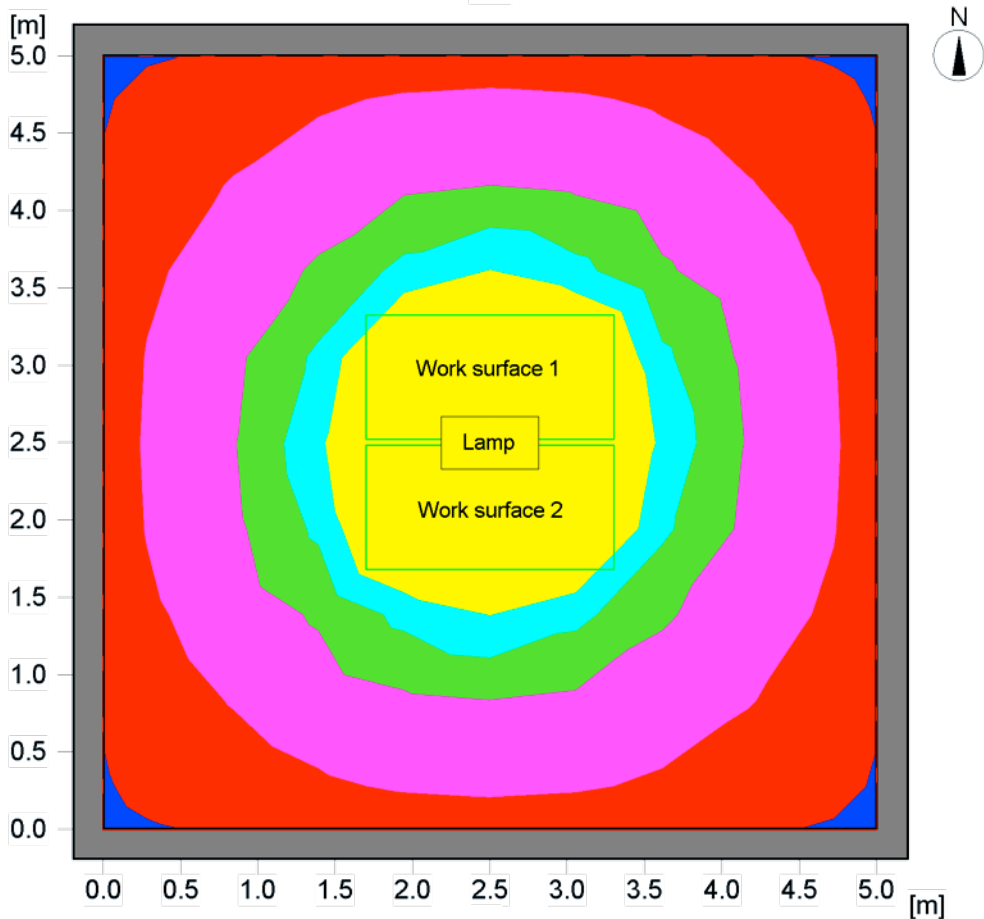
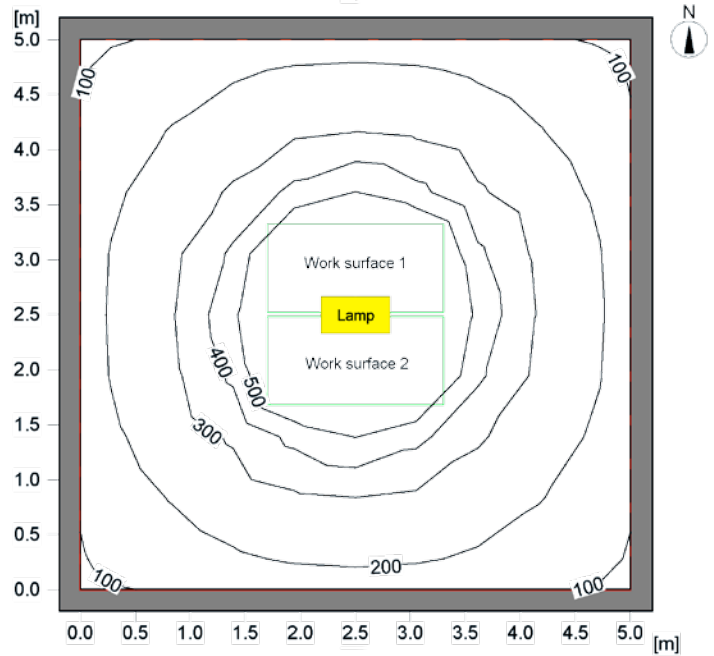
Characteristics

Total Rated Lamp Lumens 19200 (4x 4800lm)
 Total Wattage 242 (4x 55W)
 Lamp Type Osram FSD55
 Color Temperature 4000 Kelvin
 Total Luminaire Efficiency 75%
 CIE Type Semi-Indirect
 Basic Luminous Shape Rectangular
 Luminous Length 610mm / 24"
 Luminous Width 270mm / 10 5/8"
 Luminous Height 1900mm / 74 3/4"
 Working Level Height 750mm / 29 1/2"

Room Height 3m / 9' 10"
 Room Size 5m x 5m /
 16' 5" x 16' 5"

Wall Reflectivity 50%
 Ceiling Reflectivity 70%
 Floor Reflectivity 20%

Average Light Level 319 Lux
 Minimum Light Level 129 Lux
 Maximum Light Level 1046 Lux



Light levels in Lux