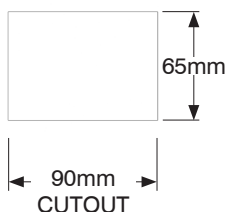
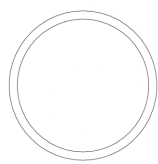
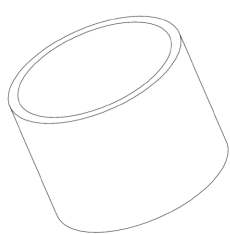


INSTALLATION SHEET

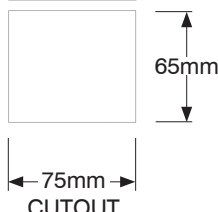
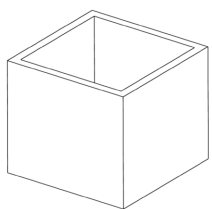
REEF

Recessed outdoor steplight

recessed box for round fixture



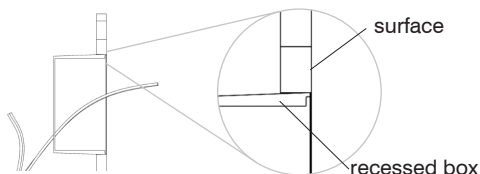
recessed box for square fixture



A Set the recessed box in place

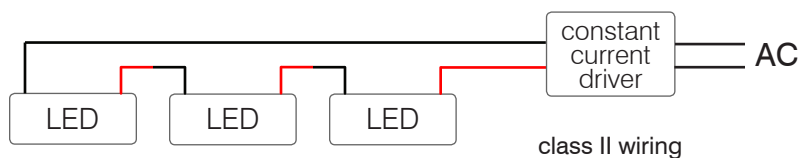
The fixture comes with a recessed box, used to secure the fixture in place. It can be used as a concrete pour box or can simply be screwed to the structure, depending on the set up.

- Fix the recessed box in place. Make sure the fixture is positioned correctly. The recessed box must not exceed from the surface
- Pull electrical wire supply through the conduit entry, about 12" total to have enough for connections
- Tuck the wires in and pour concrete if applicable



B Connect

- Unscrew the fixture from the casing to access the connections
- Insert the wire through the rubber bushing, connect the fixture



driver: constant current driver, 350mA

C Complete the assembly

- Screw the casing to the recessed box
- Screw the fixture to the casing



round



round with eyelid



square

IMPORTANT INSTRUCTIONS

read and follow these instructions before installing or maintaining this product



- make sure this product is NOT on the same circuit as inductive loads, (e.g. fluorescent bulbs, discharge bulbs, ventilation fans, etc...)
- Do not switch on line voltage until all wiring has been complete
- Incorrect wiring will result in irreparable damage to the LED and power supply
- This product should only be installed by a licensed electrician
- This product requires a remote driver

WARRANTY

- This product must be installed in accordance with all applicable installation codes and ordinance
- Limited two (2) years warranty
- Warranty is void in the eventuality of unauthorized modifications and/or improper use



www.sensolighting.com
info@sensolighting.com
T 403.216.7043
F 403.216.7045



512 Manitou Road SE, Calgary, Alberta T2G 4C4